



CRN TECNOPART, S.A.

Sant Roc 30
 08340 VILASSAR DE MAR (Barcelona)
 Tel 902 404 748 - 937 591 484 Fax 937 591 547
 e-mail: crn@crntp.com [http:// www.crntecnopart.com](http://www.crntecnopart.com)



HS- 050.50E

hotcone® BMD HEATED MACHINE NOZZLE

hotcone® (type BMD) – Heated Machine Nozzle

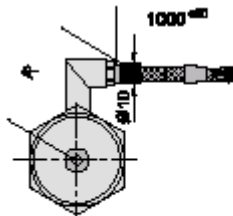
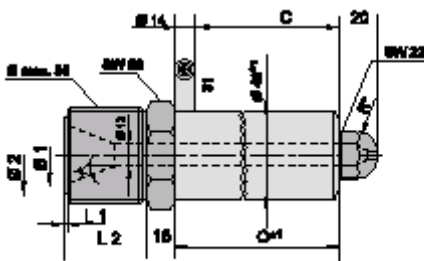


TECHNICAL DATA

- Heated machine nozzle with integrated coil heater hotspring® /Maxi/ 4.6 x 8.6 as complete sealed, plastic-dense system
- The power distribution grants an even temperature control
- With integrated thermocouple Fe-CuNi type J
- Shaft Ø 48mm for deep immersion into cavity
- Between three standard-nozzle tips can be chosen
- Connection: 1000 mm PTFE insulated CUNI leads several wires with ground wire and braided metal sleeving (standard)
- Material saving by short sprue bar
- Connection thread can be chosen Ø max 55mm length max. 45mm
- Insulating tube in option
- Other dimensions and product varieties on request
- We reserve the right to change technical details

STANDARD MODELS

Stock I. D.	Type BMD	W a 230V	O mm	C mm
5830137	BMD 90	250	30	16
5830143	BMD 140	550	80	66
5830151	BMD 190	1000	130	116
5830253	BMD 240	1150	180	166



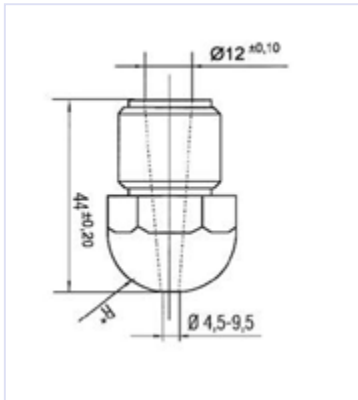
Measures in mm

VARIABLE MEASUREMENTS

- Thread diameter max. 55 mm
- L2 thread length and dimension, max. 45 mm
- Ø1 cone diameter
- L1 length of the sealed plane (on option)
- Ø2 diameter of the sealed plane (on option)
- < flow-in angle of the mass
- R* radius of the nozzle tip
- R space for connection, min 65 mm resp. 130 mm

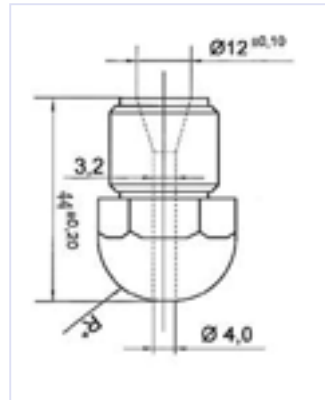
NOZZLE TIPS

- Radius R* according to customer specification.
- The diameter of the mass channel in the transition area has to be the same as the diameter of the nozzle tip



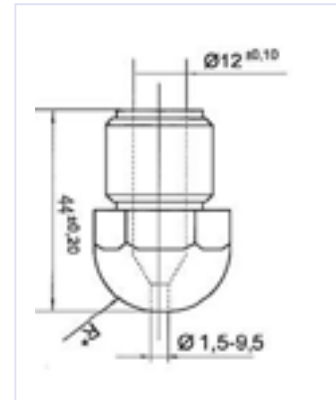
Type 1

Convex, with continuous conical bore
Increase of the flow velocity by slow tapering of the channel



Type 2

For easy flowing materials or plastics which create filaments resp.
Have a defined interruption point
(ABS, PA, PET, etc...)



Type 3

Nozzle tip for processing thermally-sensitive resp.
Hard flowing plastics (POM, PVC-hard, PPO, PPS, etc..)

STANDARD MODELS

Stock I. D	Type	Thread
251000	1	M 20 x 1
251001	2	M 20 x 1
251002	3	M 20 x 1

INSULATION TUBE



STANDARD MODELS

Stock I. D	Type BMD	Dimensions (mm)
36220	BMD 90	64,5 X 48,5 X 38
36221	BMD 140	64,5 X 48,5 X 88
36222	BMD 190	64,5 X 48,5 X 138
36223	BMD 240	64,5 X 48,5 X 188