



CRN TECNOPART, S.A.

Sant Roc 30
08340 VILASSAR DE MAR (Barcelona)
Tel 902 404 748 - 937 591 484 Fax 937 591 547
e-mail: crn@crntp.com [http:// www.crntecnopart.com](http://www.crntecnopart.com)

BrainChild

BC-140.41E

SOFTWARE DAQ: DATA ACQUISITION STUDIO

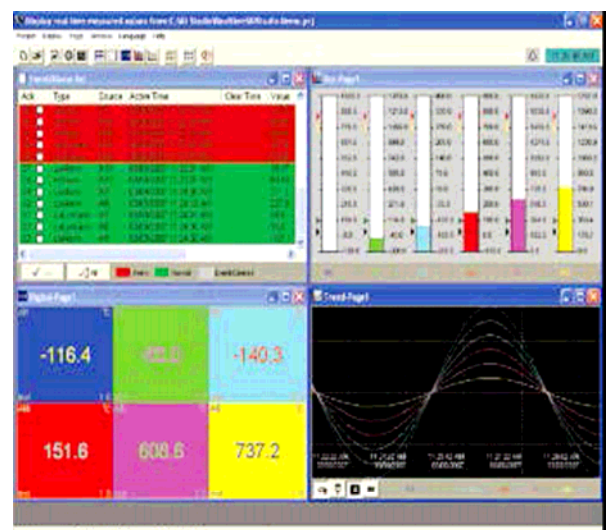
FEATURES

- Historical Alarms
- Alarms by Email
- Mathematic channels
- Comments for Alarms: 100
- Number of display pages: 200
- Number of tags display per page: 1 to 24
- Timers: 100, Counters: 50 & Totalizers: 50
- Log Speed: 1, 2, 5 10, 30, 60 and 120 Sec
- Log trigger type: By time, By value change
- Log Methods: Instant, Average, Minimum & Maximum
- Data Types: 2 byte, 4 byte and 8 byte, Decimal: 0 to 4
- Event Types: H, HH, L, LL, Rate of increase, Rate of decrease and Error
- Number of events per Analog Channel: 5
- Number of Jobs/event: 2
- Project Auto configuration option: Available
- obs: Log Alarm, Log Event, Log Alarm (Auto ack.), send email, Sound buzzer, DO Latch ON, DO Latch OFF, DO Process, Enable Timer, Disable Timer, Preset Totalizer, Reset Totalizer, Enable Totalizer, Disable Totalizer, Preset Counter, Reset Counter, Increase Counter, Decrease Counter, Log Report, Reset Min/Max/Avg and Log Message
- Math functions: SIN, COS, EXP, SQRT, LN, LOG, ABS, POW, ROUND, HI, LO, INV, TG, CTG, ASIN, ACOS and ATG
- Display languages: English, French, German, Italian, Japanese, Korean, Polish, Portuguese, Russian, Spanish, Thai and Czeck, Chinese (Traditional) and Chinese (Simplified)

PC based data logging software to be used with Modbus based devices like IO Modules, Paperless Recorders, Temperature controllers & third party .

HISTORICAL VIEWER FEATURES

- Display Historical trend
- Display Historical alarms/Events
- Display Reports (Daily, Weekly & Monthly)
- Display Historical values in tabular column
- Mark Remarks on data (Comments)
- Search data by Time, Timer Period, Event/Alarm, tag wise and Remark
- View trends both Horizontally and Vertically
- Zoom out & Zoon In
- Display view options available at 1 sec/dot, 2 sec/dot, 5 sec/dot, 10 sec/dot, 20 sec/dot, 30 sec/dot, 1 min/dot, 2 min/dot, 5 min/dot, 10 min/dot, 30 min/dot, 10 min/page, 30 min/page, 1 hr/page, 2 hr/page, 4 hr/page, 8 hrs/page, day/page, week/page and Month/page
- Display white back ground/black background
- Print trend view, Event/Alarm list, Reports & Tag Values
- Export data and alarms/events to CSV files. (Specify time or time period or all)



SOFTWARE IO STUDIO

It is standard PC software used to configure the communication settings for IO modules on the Modbus network. Once a module is detected, it is possible to view real-time data of the module directly on PC and it can be used for diagnostic purpose as well. All IO modules support RS485 communication. A RS232 to RS485 converter should be used between module and PC for configuration purpose. The address of each module is set up by using dip switches available on the module itself.