



## CRN TECNOPART, S.A.

Sant Roc 30  
08340 VILASSAR DE MAR (Barcelona)  
Tel: 937 591 484 Fax: 937 591 547  
e-mail: crn@crntp.com - www.crntecnopart.com

**EW-170.69E**

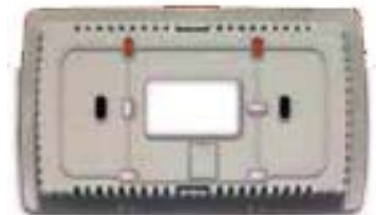
### EVODATA 100 DATA LOGGING AND ALARM SENDING SYSTEM



- »Eliwell EVODATA-100, is a recording and monitoring system compatible with Up to 6 Televis IN data entry modules.
- »Allows remote connection through a simple Web integrated in the device, As well as Twin-Data support for remote data download in Tables and graphs. (Free Software)
- »Sending alarms by email; Unencrypted protocol.
- »Compatible with Televis Twin for alarm reception.
- »Up to 6 Televis IN modules (5 probes and 2 D.I. by Televis IN).
- »Management of 1 NTC probe and 1 probe 4 ... 20 mA direct connection to EVODATA-100.

<b>EVODATA 100</b>	<b>HS33EVP0097</b>
<b>TelevisIN</b>	<b>TAMID152RS700</b>
<b>Wall mounting</b>	<b>EVA00WMRC0000</b>
<b>Trafo 230 / 24 V</b>	<b>TF111202</b>

Base for wall  
mounting  
(optional).



#### FUNCTIONS



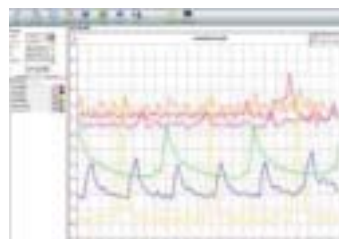
##### Integrated Web

Eliwell EVODATA-100, has an integrated Web server to manage the configuration of the alarm limits, historical and real-time data and graphical query and the configuration of sending of alarms via email



##### Data logging and alarm sending

The data can be viewed on the integrated Web server using the graphics tool or can be downloaded by the user in CSV format.



##### Twin Data

With the Twin-Data automated data download software, the user has Of the data recorded by the device in local mode, Can perform graphics and Tables as well as export of data. (\* Free)



##### Televis Twin

The alarm manager Televis Twin, presents the situation of alarms of all the centers of intuitive way, controls that the systems work properly, as well as the communications; Also allows notifications by e-mail and sms according to schedules, type of service, type of alarm, etc., to different recipients.



- »With on-board Ethernet, EVODATA-100 manages the entire installation, With daily registration
- »The probes are connected to distributed equipment (up to 6 TelevisIN)Managed by RS485
- »Management of 1 NTC probe and 1 probe 4 ... 20 mA direct connection to EVODATA 100

»Television \* has:

- 2 inputs DE, NTC, V and I (0..20,4..20
- 3 inputs DI, NTC, PTC and PT1000
- 2 DI inputs.

\* TelevisIN and probes not included