



## CRN TECNOPART, S.A.

Sant Roc 30  
08340 VILASSAR DE MAR (Barcelona)  
Tel 902 404 748 - 937 591 484 Fax 937 591 547  
e-mail: [crn@crntp.com](mailto:crn@crntp.com) [http:// www.crntecnopart.com](http://www.crntecnopart.com)

RC- 080.10E

## BAND HEATERS, FLAT HEATERS

### BAND HEATERS STANDARD MODELS



Resistance shielded, not sealed, wrapped in sheets outside steel.  
Maximum load recommended  $4 \text{ W / cm}^2$ .  
Connections may be wired with screw terminals and male with an outlet.  
Are manufactured to order.

**Indicate diameter, width, power, voltage and type and location of connections.**

This can include holes or notches, in this case indicate position.

It may also lead incorporated thermocouple.

If desired they can incorporate an external thermal insulation to improve efficiency.

If size permits can also incorporate a thermostat, mechanical, control

### NOZZLE HEATERS

Very suitable for injection nozzles and locations are conducive to falling materials, due to its completely sealed construction.  
They are made from brass tubing, the hood is welded to the body of resistance.  
They can incorporate a thermocouple.



#### Features.

Connection (2 wires + ground)  
Length 500 mm.  
On request 1000, 1500 o 2000 mm.

Terminals tip.

Tube output cable: 25 mm,  
On request 20 or 40 mm.

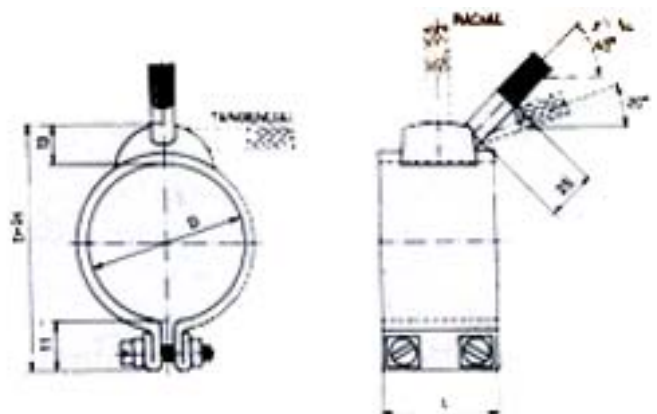
Exit : Axial 45°

On request Axial 0°, radial o  
Tangential

Voltage 230 V (other on request)

#### STANDARD MODELS NORMALIZED POWER W A 230 V

Ø mm.	WIDTH mm.						
	20	25	30	35	40	45	50
30	75	95	110 150	130	150	170	190
35	90	110	140	150	175	200	220
40	100	125	180	190	225	225	250
42	105	130	160	185	210	235	265
45	110	140	175	200	225	255	285
50	125	160	200	220	250	285	315
66	140	175	205	240	275	310	345
60	150	190	225	265	300	340	375
65	165	205	245	285	325	370	410
70	175	220	265	305	350	400	440
75	190	235	280	330	375	425	470
80	200	250	300	350	400	450	500
85	215	265	320	375	430	480	535
90	225	280	340	400	450	510	565
95	240	300	360	420	475	535	600
100	250	315	375	440	505	565	630



## BAND HEATERS WITH CERAMIC ELEMENTS



Resistance shielded, not sealed, wrapped in sheet steel exterior and a heating element mounted on ceramic elements.

Maximum recommended load 8 W / cm <sup>2</sup>.

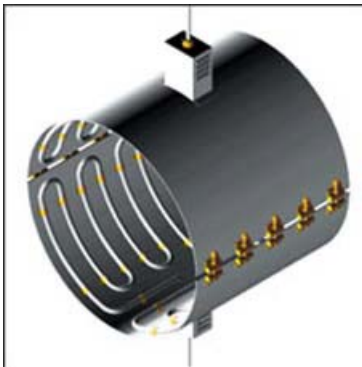
Connections may be wired with screw terminals and with an outlet.

Are manufactured to order.

Indicate diameter, width, power, voltage and type and position of connections.

This can include holes or notches, in this case indicate position.

## BAND HEATERS WITH TUBULAR ELEMENTS



Being made of tubular resistance, sealing the heating element is guaranteed in normal use.

By combining conductive heat transfer with radiation, and taking into account their high specific charge (from 6 to 10 W / cm <sup>2</sup>) are achieved fairly high heating rates.

The working temperature reaches to 750 ° C and temperature control espoible resistance through thermocouples installed inside the tubular elements.

The tubular elements can also be flat

It always made to order.

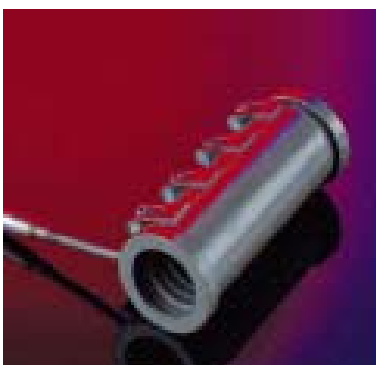


### DBM STANDARD MODELS

Made from WRP MAXI Hotset model, its main application is the injection nozzles of plastic, but its usefulness extends to other industrial applications which require heat input to cylindrical surfaces, pipelines etc. ...

Connections: Teflon cables of 1000 mm. with drain wire and wire mesh

W at 230 V	Inner Ø mm.	L mm.	Exit	Thermocouple
300	30,0	30,0	Rad. 45°	-
400	30,0	38,0	Rad. 45°	-
350	32,0	30,0	Tang.	Fe-Co
500	38,0	32,0	Tang.	Fe-Co
450	40,0	30,0	Rad. 45°	-
350	42,0	22,0	Tang.	-
450	44,4	34,9	Tang.	-
500	50,0	34,0	Rad. 45°	-
350	50,8	25,4	Tang.	-



### OMH STANDARD MODELS

Made from WRP MAXI 4.6 x 8.6 model spiral-wound with external protection, and special hoops on the ends to prevent, possible leakage of material, jeopardize the strength reinforced.. Los modelo standard incorporan un termopar del tipo K (NiCr-Ni)

Connecting cables of 1500 mm, with fiberglass insulation and protected by a flexible metal tube.

Model	Inner Ø mm..	OutherØ mm.	L mm.	W	V
OMH 5	31,5	49,2	78	500	230
OMH 20	31,5	49,2	105	700	230
OMH 50	42,0	59,7	172	1300	230
OMH 80	42,0	59,7	190	1400	230
OMH 125	50,0	67,7	335	1700	230
OMH 200	64,0	81,7	295	2400	400

## BAND HEATERS WITH BLOWERS



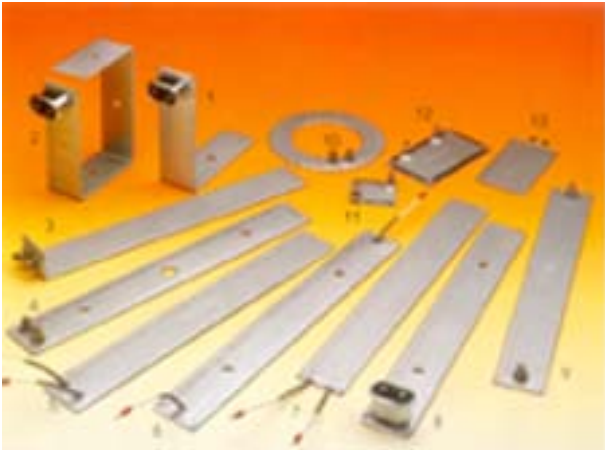
This model, equipped with a cooling blower, is designed for applications such as plastic extrusion, which emphasize a high temperature and direct cooling.

The set is made up of one or more resistors with ceramic elements. The whole is in an outer casing in stainless steel plate fitted with a blower for cooling. The connections of the heating elements and blower are independent. The set is equipped with a quick locking system

They are made from a minimum size of  $\varnothing 56 \times 120 \text{ mm}$

Can be fitted with holes and brackets for thermocouple probe.

## FLAT HEATERS



Resistance shielded, not sealed, wrapped in sheet steel exterior. And are custom made on demand.

**Indicate length, width, power, voltage and type and position of connections.**

Maximum load recommended  $4 \text{ W} / \text{cm}^2$ .

Connections can be output cables, screws and nut tightening terminal circular pin male plug.

If desired can incorporate J-type thermocouple for temperature control.

If size permits can also incorporate a thermostat, mechanical, control